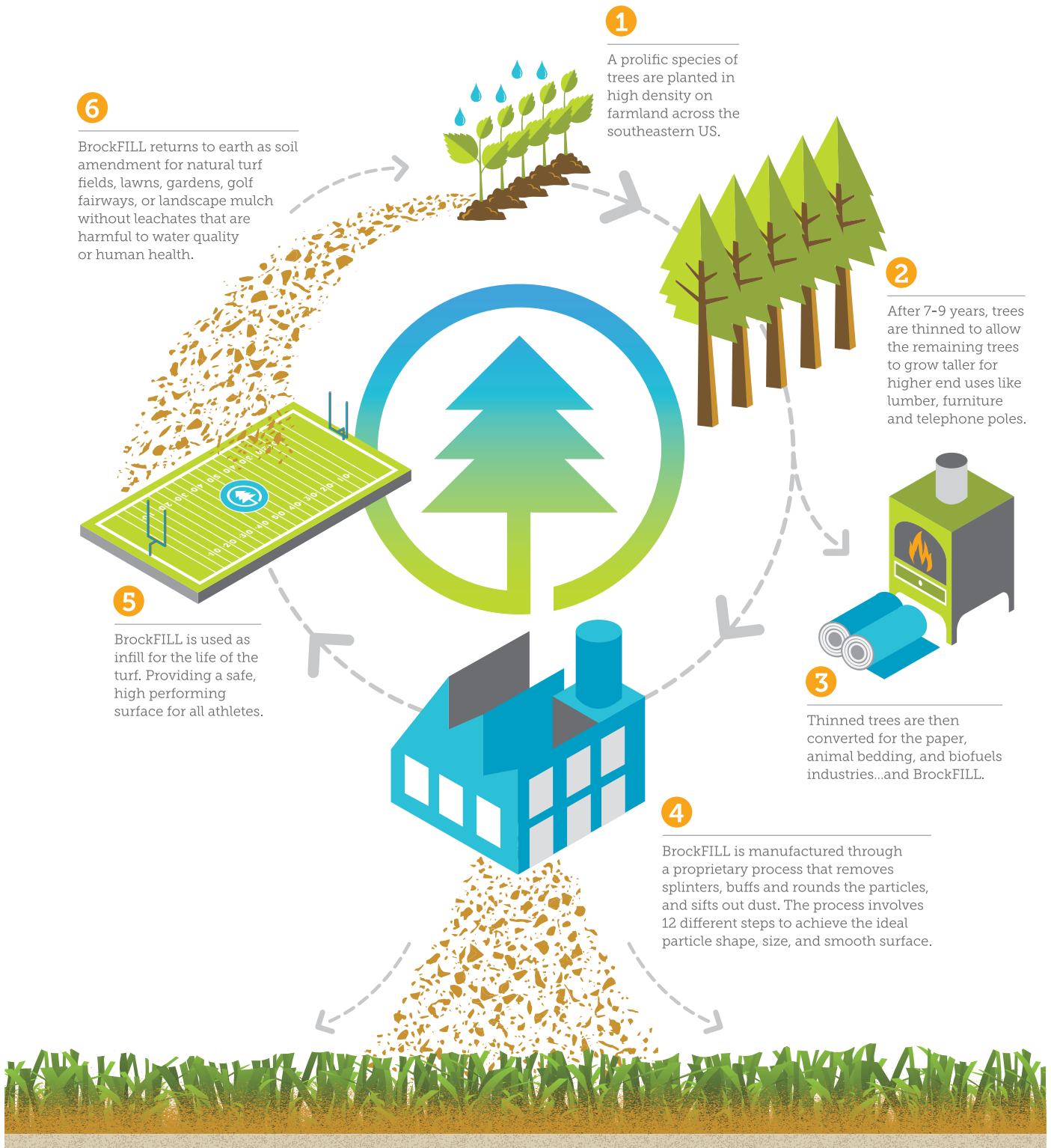


# It's Sourced from Softwood Tree Farming: An Abundant, Renewable U.S. Resource.



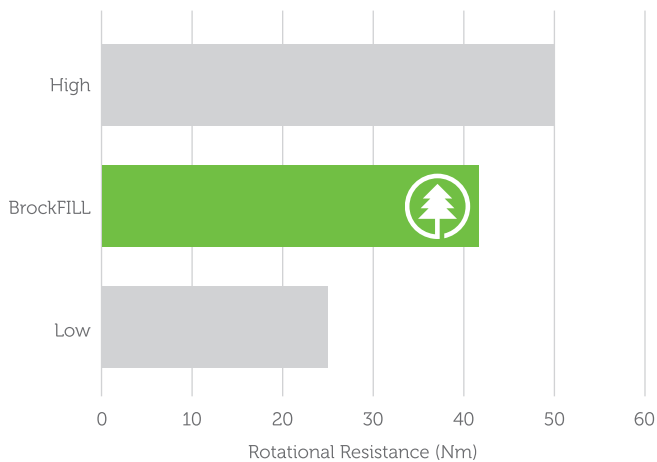
**BROCKFILL RECIPE: 1 lb BrockFILL, 4 lbs Sand, in a 2" Slit Film or Blended Turf over Brock ShockPad**

# Tested for... everything.



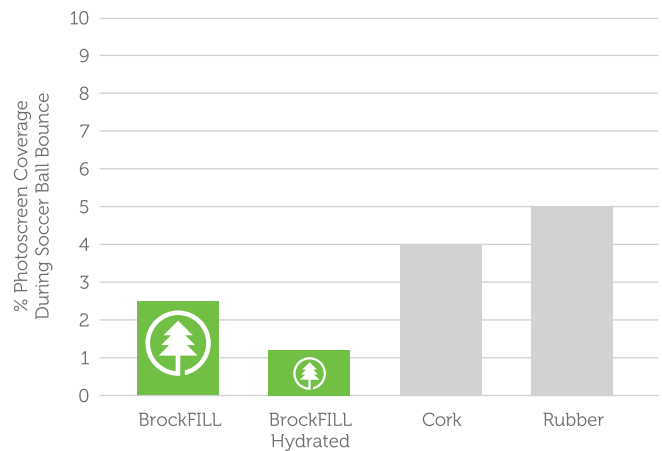
## Traction

Humans evolved running on natural surfaces, not a rubberized bouncy turf that changes consistency across the field. BrockFILL feels like natural turf under foot and falls within the optimal traction range (FIFA 2-STAR) without the variability in energy restitution ("bounce") of crumb rubber.



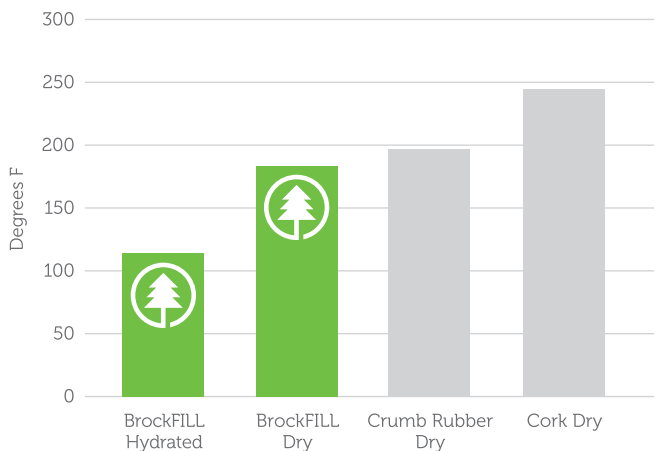
## Splash

Keeping infill in the turf is key, so the lower the splash the better. BrockFILL achieves the lowest splash when dry compared to other infills and is even better when damp.



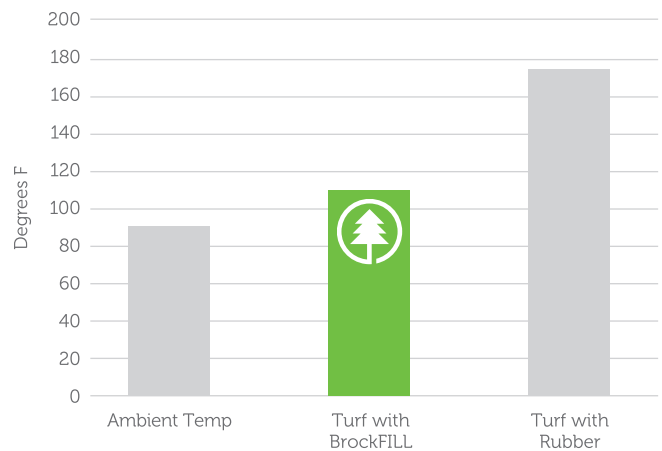
## Abrasion

Besides field temperature, abrasion is the most common complaint from athletes about artificial turf. Independent testing from Labosport measures heat generated as a device slides across the turf sample using a mass and speed representative of a sliding athlete. BrockFILL generated the lowest heat score, therefore the lowest abrasion, of any infill, even crumb rubber. Better yet, abrasion is even lower when BrockFILL is damp.



## Cooling

BrockFILL is a significantly cooler infill than crumb rubber and does not require watering. Each BrockFILL particle is naturally hydrophilic, so they absorb natural rainwater and condensation into their core, not just on the surface. Moisture is then released slowly for extended cooling. Plus BrockFILL gains weight when wet, so it doesn't float or migrate like cork.





## Durability

BrockFILL is an extremely durable organic material. After 20,000 Lisport cycles, the particle dimensions remain virtually unchanged. Additionally, the particles improve over time! They get smoother, further lowering skin abrasion without breaking down.



BrockFILL before Lisport test.

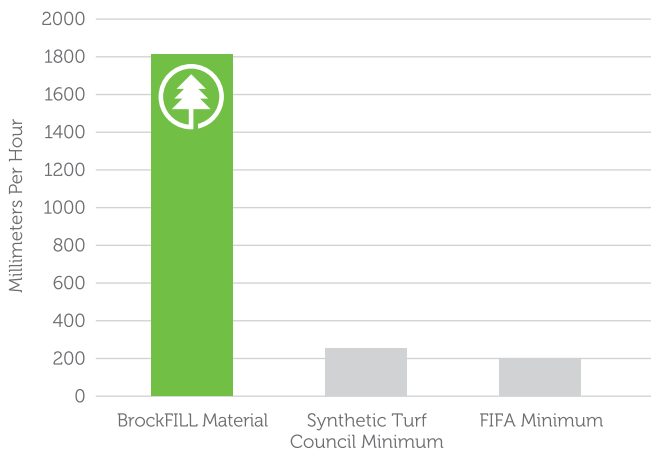
BrockFILL after 20,000 Lisport cycles.

\* BrockFILL at 120x magnification.



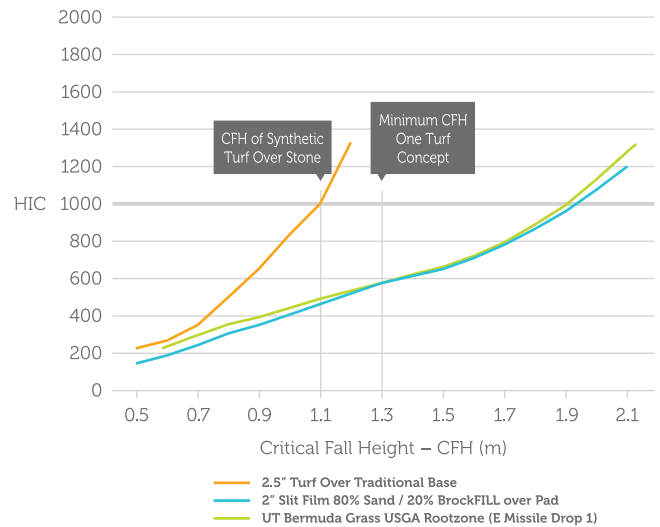
## Drainage

Like all Brock products, BrockFILL has higher permeability than the turf itself. When tested in turf, the system drains over 50" per hour. Even after 8 years of simulated use with zero maintenance, the field still meets the requirements of International drainage standard. (But you should still maintain your field!)



## Player Safety

The BrockFILL system utilizes Brock shock pads to provide the optimal energy absorption and head injury protection, while remaining firm for running: something a rubber and sand field over stone cannot achieve.



## ... and we mean everything.

- Head Impact Criteria
- Gmax Test
- Permeability in the System
- Shock Absorption
- Energy Restitution
- Rotational Resistance
- Vertical Deformation
- Ball Rebound / Angled Ball Rebound
- Ball Roll
- Flammability
- Ball Splash
- Temperature Testing
- Durability
- Density at Different Moisture Content Levels
- Permeability (material only)
- Total Pesticides
- Total Herbicides
- Leachable Pesticides
- Leachable Metals
- Total Metals
- Hexavalent Chromium
- Mold Growth
- Bacteria Growth
- Freeze-Thaw Cycle
- Insect Resistance
- UV Exposure
- Flotation
- Abrasion

\* All test reports available.